

**DESIGNED FOR EUROPE,
BUILT IN EUROPE.**



RENTAL

PUMPS FOR YOUR RENTAL APPLICATIONS

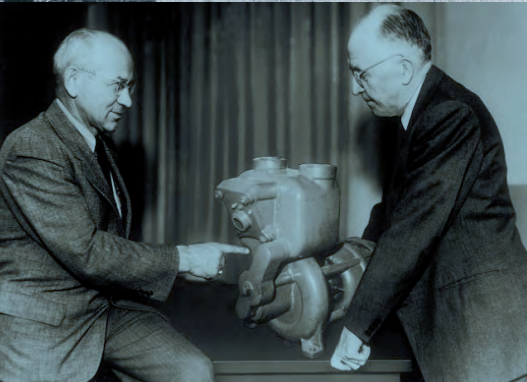
High performance rental pumps that
only come home when the job is done.



EUROPE

The Pump People

GORMAN-RUPP



The Gorman-Rupp Company was founded in 1933 with a handshake between J.C. Gorman and H.E. Rupp. They pooled \$1,500 and began manufacturing pumps in a barn outside Mansfield, Ohio. The rest is as they say, is history. Over the years, our continued growth has been based on our focus on improving our pump design and solid engineering. As a result, we have become a company known for market innovations and advancements that continue to set the standard in the pump industry.

With over one million Gorman-Rupp pumps and pump systems installed worldwide, we have the experience to understand the demands placed on rental pumps. Whether for the construction industry, industrial applications, wastewater treatment, irrigation or flooding. Wherever powerful and durable pumps are needed, our experience of over 85 years in a wide range of applications helps us to find a solution.

Gorman-Rupp pumps are available in over 100 countries worldwide. Throughout Europe, we ensure proximity to our customers with production and distribution in the Netherlands and Belgium. Gorman-Rupp places great emphasis on using the latest manufacturing techniques with modern equipment, as well as continuous education and training of the workforce to ensure the production of pumps that are among the most reliable in the industry.



PUMPS FOR YOUR RENTAL BUSINESS

A GROWING AND ATTRACTIVE MARKET

The pumping of water, sewage, waste water, sludge and other liquids has been a well-known challenge. Gorman-Rupp is more aware of this than any other pump manufacturer. Why? Because apart from manufacturing pumps, we also run a large scale rental operation in the Netherlands and Belgium. So we understand your demands when it comes to pumps. Rugged, reliable, user friendly and easy maintenance.

The rental business with pumps is a growing market that will continue to develop. This is driven by climate change with it's less frequent, but all the more violent rainfall. But also the prolonged periods of drought, where water must be transported to where it is needed for irrigation.

Another aspect of the rental business is the reconstruction and modernisation of industrial plants, but also sewage systems and treatmentplants. Bypasses have to be created for a certain period of time, safely and reliably. These remain in place until the new pipes and installations are connected.

In addition, the trend in the construction sector, but also in other areas, is towards the flexible use of machinery that does not tie up capital. This has led to an increasing demand for rental pumps and the trend is continuing.



FIELDS OF APPLICATION FOR RENTAL PUMPS



CONSTRUCTION INDUSTRY

In the construction industry, rental pumps are often used for the general drainage of excavation pits, especially during heavy rainfall. Dewatering on construction sites that are below groundwater level is a prime example of the use of rental pumps due to the time limitation to one project. The recirculation of flushing water mixed with soil, rock and flushing sludge is also an issue in horizontal or vertical drilling. The pumps can also be used to clean vehicles and machines.



INDUSTRY

When converting, modernizing or repairing production plants, industrial companies need to install bypass solutions, back-up lines or temporary replacement for a failed pump. Here the use of high-performance rental pumps is the method of choice. Drainage and cleaning of production plants also play a role here.

WASTE WATER

Rental pumps for bypass lines are temporarily used for the renewal of sewage lines. High-performance rental pumps are also used when additional capacity is required or as a temporary replacement for failed pumps. This applies to both industrial and municipal waste water treatment plants.

IRRIGATION

One consequence of climate change is that farmers in regions that used to receive sufficient year-round rainfall, now see the need to irrigate their fields during very dry periods. Since the pumps for this are not used all year round, renting the machines is a popular way to maintain financial flexibility.



FLOODING

As another consequence of climate change, heavy rainfall events lead to flooding. Easy and quick access to powerful rental pumps makes it possible to reduce or even prevent damage. This applies to private, industrial and governmental institutions.

WHY GORMAN-RUPP?

With over 85 years of experience in pump construction and our commitment to the rental industry for more than 25 years, we know the needs of your end customers but also your challenges in the rental business.

We offer not only high-quality and powerful pumps but also the necessary service and support you in selecting the right pump for your customers projects. Furthermore, we train your employees in the maintenance and use of the pumps so that you can operate independently and successfully in the rental business. The training can take place in our training centres in the Netherlands or Belgium, or on your own premises if desired.

PUMPS WITH COMBUSTION ENGINE

Independent of grid power and usable everywhere, driven by modern EU stage V engines these units are available either open, with engine cover or completely in a soundproof canopy. Suitable for HVO fuels, saving up to 89% on CO2 emissions.



PUMPS WITH ELECTRIC MOTOR

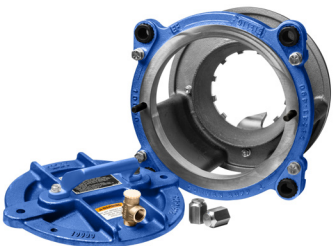
If a permanent power source is available, the high-performance pumps with electric motor are an efficient, CO2 neutral and extremely quiet alternative to the use of pumps with combustion engine.



TRAINING

In our two training facilities in Belgium and the Netherlands we teach you how to select the right Gorman-Rupp pump for your specific application.

We will provide you with all the necessary information to keep your knowledge level on Gorman-Rupp pumps as high as possible.



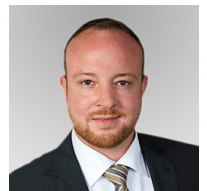
PARTS

Should a part nevertheless be worn out or a repair becomes necessary, we can guarantee a short-term supply in Europe with stock over 300 thousand genuine spare parts.



SUPPORT

Our team will support you in selecting the right pumps for a specific application, in maintenance or repair of the pumps.



DESIGNED FOR EUROPE, BUILT IN EUROPE

With design- and manufacturing centres in the Netherlands and Belgium, all Gorman-Rupp equipment is designed and built specifically for the European Market. We know your applications, we know the technical needs of the Market.

Having our own design- and manufacturing also allows Gorman-Rupp to make customer specific equipment, that fully blend into your rental fleet.



GORMAN-RUPP EUROPE

Zandweistraat 19, NL-4181 CG Waardenburg
Tel: +31 (0)85 773 0080
E-mail: GREsales@gormanrupp.com

GORMAN-RUPP BELGIË

Rue des Métiers, B-5020 Suarlée (Namur)
Tel: +32 (0)81 779977
E-mail: info@b@gormanrupp.com

www.grpumps.eu



EUROPE

The Pump People